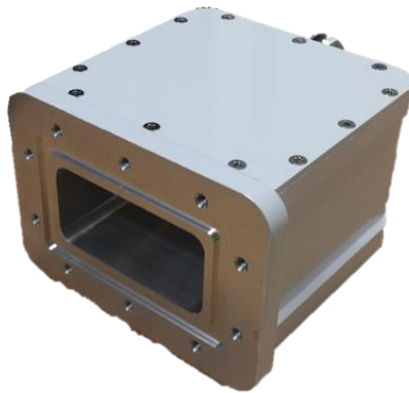


# C-band Dual LNB

## Specification



PTL-CDAN/F series are designed for indoor or outdoor C-Band communication systems. This LNB provides a combination of superior performance, reliability.

This LNB has a typical gain of 65dB with Noise Figure less than 0.5dB without frontal isolator.

This LNB has been tested and calibrated between  $-30^{\circ}\text{C}$  and  $+60^{\circ}\text{C}$ , so it assures very good gain stability with temperature.

### **Main Features**

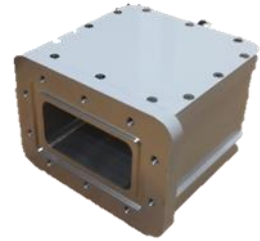
- Ultra wide bandwidth (3.4~4.2GHz/4.5~4.8GHz)
- Satellite Band : Standard, Extended, ST-1/Palapa, Gorizont, Insat-C
- Dual Band (2-LO)
- Ultra Low Noise Figure
- Ultra Low Phase Noise
- Internal/External Reference Auto-detect/selection
- High P1dB, High IP3
- LO frequency switched by DC input level(13/18V) thru IF cable

**Preliminary**

# C-Band Dual LO LNB

## Main Feature

- Ultra wide bandwidth (3.4~4.2GHz/4.5~4.8GHz)
- Satellite Band : Standard, Extended, ST-1/Palapa, Gorizont, Insat-C
- Dual Band (2-LO)
- Ultra Low Noise Figure
- Ultra Low Phase Noise
- Internal/External Reference Auto-detect/selection
- High P1dB, High IP3
- LO frequency switched by DC input level(13/18V) thru IF cable

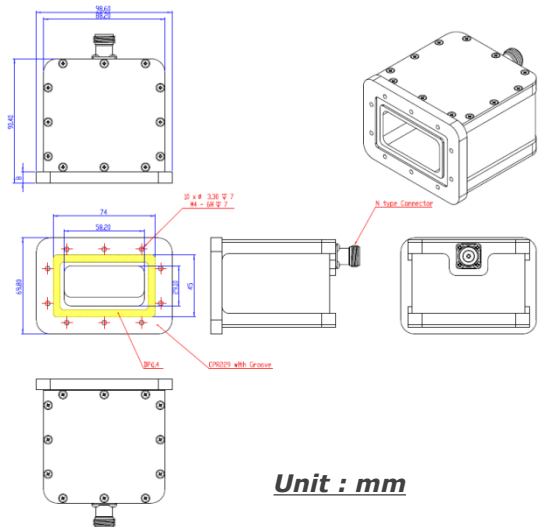


Item	Parameters	Specifications	Notes	
Electrical Spec.	RF Input Frequency	Band 1 : 3.4~4.2GHz Band 2 : 4.5~4.8GHz	Band 1 : Standard Extended ST-1/Palapa Gorizont Band 2 : Insat-C	
	LO Frequency	Band 1 : 5.15 GHz Band 2 : 5.76 GHz	Band 1 V <sub>DC</sub> : 13V Band 2 V <sub>DC</sub> : 18V	
	IF frequency	Band 1 : 950 ~ 1750 MHz Band 2 : 960 ~ 1260 MHz		
	Phase Noise	@ 1 kHz	-75 dBc	Refer to typical Phase Noise plot
		@ 10 kHz	-85 dBc	
		@ 100 kHz	-95 dBc	
		@ >1 MHz	-120 dBc	
	LO stability	<ul style="list-style-type: none"> <li>• Internal : ±0.25ppm</li> <li>• External : Dependent on Ext. reference</li> </ul>	over temp. range	
	Required External Reference Level	-5dBm	Internal reference is selected below 0dBm external reference input	
	Conversion Gain	65 dB	typ.	
	Gain variation	±0.4 dB	within 30 MHz max.	
		±2 dB	over 800MHz BW	
	Noise Figure	0.5 dB	Max.	
	Input / Output VSWR	Input VSWR : 2.0:1 Output VSWR : 1.5:1	max.	
P1dB output	20dBm	typ.		
OIP3	40dBm	typ.		
Image Rejection	-60dBc	Max.		
Band Switch Configuration	Band1	VDC 13V±2V		
	Band2	VDC 18V±2V		
Power Consumption	Refer to the table	Internal DC/DC converter		

Item	Parameters	Specifications
Mechanical Spec.	Input	CPR-229 with Groove
	Output (waterproof)	N-connector F-connector
	Dimensions	90.4 x 98.6 x 69.8 mm
	Weight (typ.)	840 g
Thermal Spec.	Operating temperature	-30 ~ +60 °C
	Storage temperature	-40 ~ +85 °C

## Line-Up

Model No.	IF Connector
PTL-CDAN-01	N Connector
PTL-CDAF-01	F Connector



**Unit : mm**

# Mechanical Drawing

